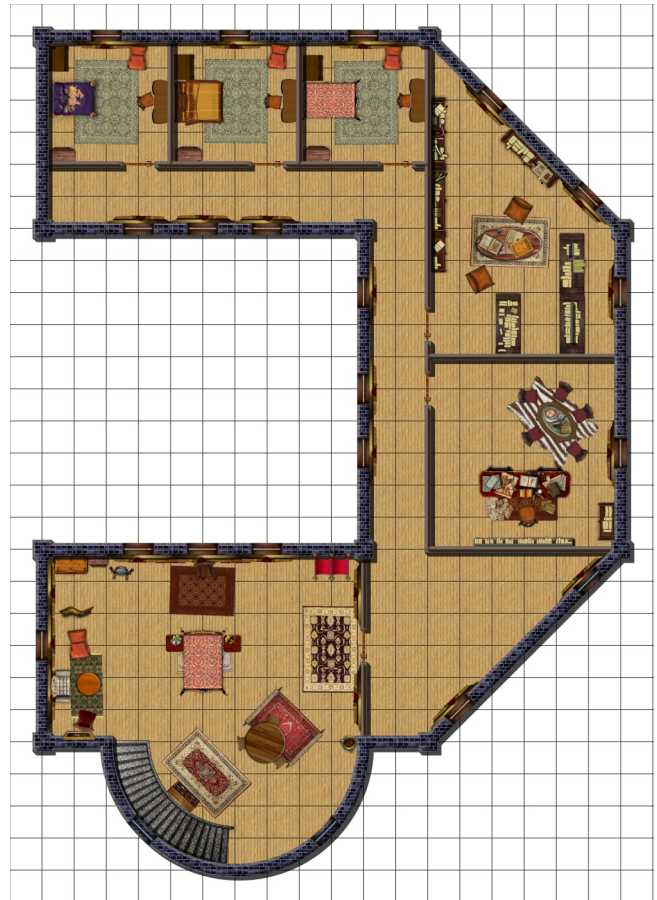


Maps for “The Midnight Mirror” by Paizo Publishing. Boroi Manor—Second Floor

Instructions:

This map is designed to be printed on 8½” x 11” (letter) paper, assembled with clear tape, and then cut out. You can mount it on foancore and suspend over the first floor map if desired. Because of the odd shape, there is significant overlap on the first 6 sheets—this allows you to decide where your seam lines will be. The last sheet is rotated 90° to avoid having to print another sheet with less than 1 square of map on it.



Community Usage Statement: "This map uses trademarks and/or copyrights owned by Paizo Inc., which are used under Paizo's Community Use Policy. We are expressly prohibited from charging you to use or access this content. This [website, character sheet, or whatever it is] is not published, endorsed, or specifically approved by Paizo Inc. For more information about Paizo's Community Use

These maps are created with Dundjinni software, and using additional imagery from the public forums at www.dundjinni.com. Copyright of individual graphic elements remain with the creators, and may not be offered for sale.

Map created by Lamplighter. 